

# Email Setup Instructions

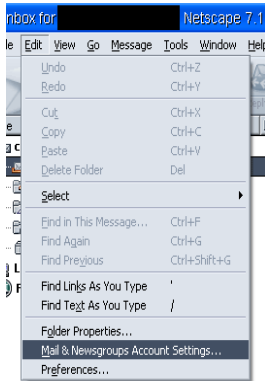
## Netscape, Eudora, and Mozilla

### Netscape 7.1

#### Step 1:

Open the Netscape mail software, then go to Edit -> 'Mail & Newsgroups Account Settings', as pictured below in Fig 1.

Fig 1.



#### Step 2:

On the left hand side of the dialog box, select 'Outgoing Server (SMTP)' (see Fig 2). Ensure that the Server Name is set to the correct mail server (smtpauth.rtconnect.net), and check the box that is labeled 'Use name and password'. Enter the username in the text box labeled 'User Name'. Click 'OK' to apply the settings.

Fig 2.

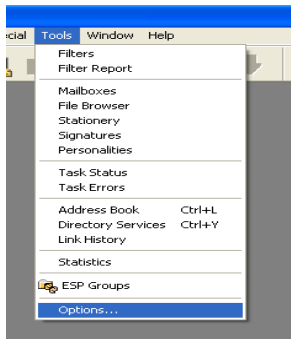


# Eudora 6.0

## Step 1:

Open Eudora, and go to Tools -> Options as in Fig 3.

Fig 3.



## Step 2:

Select the 'Sending Mail' icon on the left hand side. Double check that the SMTP server is set to your outgoing mail server (smtpauth.rtconnect.net). Check the box that is labeled 'Allow Authentication' as in Fig 4.

Fig 4.

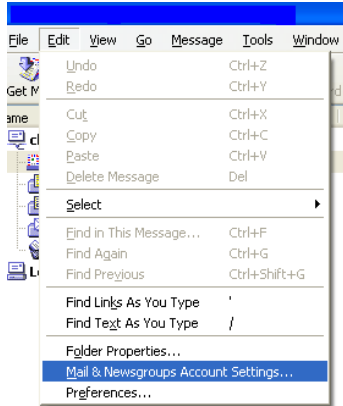


# Mozilla 1.5

## Step 1:

Open the Mozilla mail client, then go to 'Edit' -> 'Mail & Newsgroups Account Settings' as shown below in Fig 5.

Fig 5.



## Step 2:

When the dialog box appears, select the 'Outgoing Server (SMTP)' option on the left hand side. Ensure that the 'Server Name' text box contains the outgoing mail server for the account in question (smtpauth.rtconnect.net). Select the checkbox labeled 'Use name and password', and then enter the username in the 'User Name' field. See Below in Fig 6. Hit 'Ok' to apply the settings.

Fig 6:

